

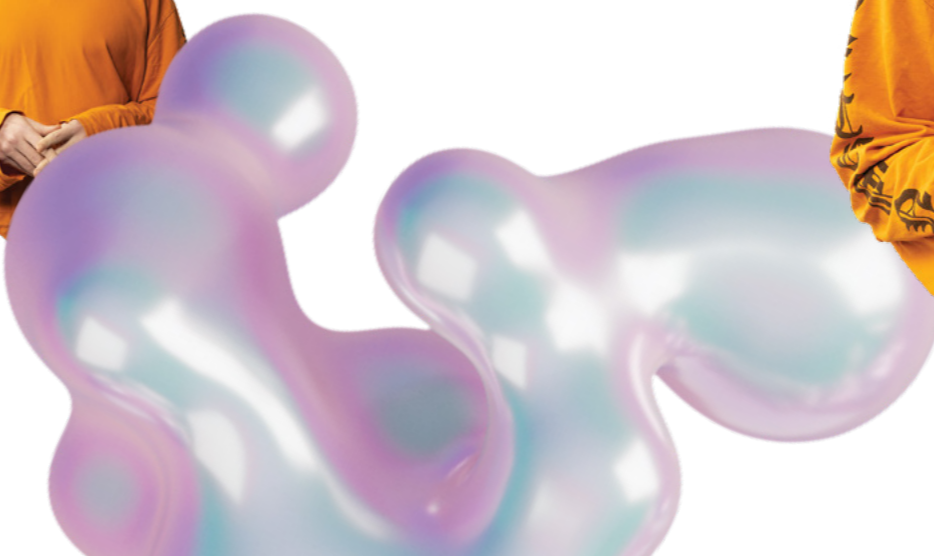
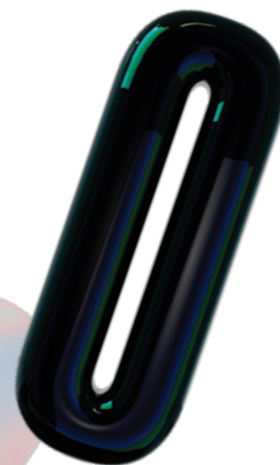
**GRIFIN**  
**2025**







GRIFFIN REDEVELOPMENT	4
2025 SEASON	6
SEASON CALENDAR	16
FOR AUDIENCES	18
THINGS TO KNOW	18
SUBSCRIBE TO GRIFFIN	19
BOOKING FORM	21
CREATIVE PROGRAMS	23
SUPPORT US	24
OUR DONORS	26
OUR FAMILY	27



# HELLO!

As I look ahead to 2025, the second year outside our home, the SBW Stables Theatre, I am increasingly looking back at the last 45 years of Griffin. I find myself marvelling at how our stage has predicted the future, over and over again.

**Suzie Miller's** *Prima Facie* tackled issues of justice and accountability for gendered violence a full year before #MeToo became a global movement. **Gordon Graham's** *The Boys* offered a raw portrayal of toxic masculinity before we even had the language to describe it. Plays like **Brooke Robinson's** *Good Cook. Friendly. Clean.* and **Louis Nowra's** *The Emperor of Sydney* foresaw the waves of gentrification and housing crises that now loom large over our city.

For me, this has always been theatre's advantage over mediums like television and cinema. Unburdened by months and years of post-production, theatre can be nimble, responsive. With just a playwright's words and some talented actors, a play can speak perfectly to the hour, the minute, the second—and sometimes, to the future.

Time will tell if I'm right or wrong, but I see a similar destiny for many of the works in our 2025 Season. **Alana Valentine's** *Nucleus*, **Ang Collins' Naturism, and **Nathan Harrison's** *Birdsong of Tomorrow* each explore the increasingly unstable relationship between humans and our climate. Meanwhile, **Michelle Lim Davidson's** *Koreaboo* and **Iolanthe's** *SISTREN* each use comedy to tackle the increasing agitation between generations (ever seen a Zoomer and a Boomer try to hold a conversation at family Christmas?!). Together, these plays speak to a major moment of social reckoning for our species—which each playwright approaches with their own kind of radical optimism for the potential for the humans within it.**

Yet for all these plays have in common, the experience of each could not be more different. Each play traverses a gamut from the intimate and profound, to the ridiculous and spectacular. Each script will be brought to life by some of Australia's finest performers, from established greats of our stage like **Paula Arundell** and **Michelle Lim Davidson**, to burning next-generation talent like **Joseph Althouse** and **Camila Ponte Alvarez**. Each work will explore the full, blazing potential of theatre outside the SBW Stables Theatre, before we start making plans to return home.

It's going to be another big, ridiculous, beautiful year—and we can't wait to embark on it with you!

Much love,  
Declan x

DECLAN GREENE  
ARTISTIC DIRECTOR



**Acknowledgement of Country**  
Griffin Theatre Company operates and tells stories on the unceded lands of the Gadigal of the Eora Nation. We acknowledge and honour Aboriginal and Torres Strait Islander people as the oldest continuous living culture on the planet, with more than 60,000 years of storytelling practice shaping and underpinning all aspects of Australian culture.



# ABOUT GRIFFIN

## STORIES ABOUT US, BY US, FOR US

Griffin Theatre Company is Australia's premier new writing theatre.

For over 40 years Griffin has been solely dedicated to the development and staging of Australian plays, ensuring that our nation's most important stories have a permanent place on our stages. As one of the great engine rooms of Australian theatre, we have shaped and platformed the narratives that help us know who we are, where we've been and who we want to become.

Griffin is woven into the fabric of Australian theatre. Since 1979 we have debuted over 400 new Australian works, staged landmark national stories and launched the careers of some of our most prolific writers. Plays that took their first steps at Griffin have gone on to travel across Australia, to the West End, Broadway and Shanghai—just to name a few!

While the SBW Stables Theatre is undergoing major redevelopment, Griffin has been on the go—partnering with some of Australia's finest theatre companies to make ambitious new work and welcome new audiences. In 2025, we're excited to grow these partnerships before returning to our home turf at the Stables in 2026.



# ELEVATING GRIFFIN

## BRICK BY BRICK—GRIFFIN IS RE-IMAGINING ITS FUTURE AS WE BUILD A NEW HOME FOR AUSTRALIAN PLAYWRITING

You may have heard, our beloved home—the SBW Stables Theatre—is undergoing a major makeover. The new theatre is being designed by award-winning architect **Tim Greer** (Tonkin Zulaikha Greer Architects) and will soon be a shining and welcoming beacon at the top of Nimrod Street.

Most importantly—for the first time in the history of this 54-year-old theatre—we will have an elevator!

The upstairs theatre (still with its unique kite-shaped stage) will have wheelchair accessible seating and a wheelchair accessible back of house, including the dressing rooms. There will also be fewer steps to get to your seat (still general admission, in case you were wondering!). In addition, the theatre will be digitally-enabled to support touring opportunities and have better provision for d/Deaf, hard of hearing and vision impaired audiences.

We will have a new destination bar and multi-purpose foyer which can be used for play readings, cabaret, stand-up and other events. And in a perfect but-wait-there's-more moment, we will have a lower level to house our very own rehearsal room.

This is truly game changing for Griffin and the SBW Stables Theatre. We're excited to have not just one theatre, but three creative spaces—which means more opportunities to hear and see the best Australian stories and live performance.

This is a major undertaking for a company the size of Griffin and requires more resources and additional expertise.

We are incredibly grateful for a number of significant gifts that have kick-started our Capital Campaign. If you would like to know more about how you can help, please contact our Development team at [philanthropy@griffintheatre.com.au](mailto:philanthropy@griffintheatre.com.au).

We are also grateful for the funding support we have received from the NSW Government through their Creative Capital Fund and from the City of Sydney.

Whilst we still have a way to go—and lots of drilling—we are excited for the possibilities this offers our artists and audiences, and for the future of Australian playwriting.

For updates, including news of our grand re-opening in 2026, head to the Griffin website.





GRIFFIN THEATRE COMPANY PRESENTS  
IN ASSOCIATION WITH SEYMOUR CENTRE

# NUCLEUS

BY ALANA VALENTINE  
14 FEBRUARY – 15 MARCH  
📍 SEYMOUR CENTRE

**Director** Andrea James  
**Designer** Isabel Hudson  
**Lighting Designer** Verity Hampson  
**Dramaturg** Dylan Van Den Berg  
**With** Paula Arundell

♥ IF YOU LIKED:

*Prima Facie* by **Suzie Miller**  
*Rice* by **Michele Lee**  
*Diving for Pearls* by **Katherine Thomson**

Gabriel is a nuclear engineer. Cassie is an anti-nuclear campaigner. For nearly 30 years their lives have collided and entwined, with Cassie's cause dominating public opinion across the decades. But with political change rumbling underfoot, Cassie's life's work could yet be undone—and it's all led to this explosive night.

Against the enflamed background of one of Australia's most divisive environmental issues, **Alana Valentine's** tender, surprising new play interrogates the intersection of personal ambition and global responsibility.

*Nucleus* welcomes two of Australia's theatre greats back to Griffin—one of our most celebrated and awarded playwrights Alana Valentine (*Ladies Day*) and the great **Paula Arundell** (*The Bleeding Tree*). Directed by Griffin's very own Associate Artistic Director **Andrea James** (*swim, Jailbaby*), *Nucleus* tears through long-drawn battle lines to reveal what's at our core.

PASSIONATE

POLARISING

POIGNANT

**Venue**  
Reginald Theatre,  
Seymour Centre  
Cnr City Road  
and Cleveland Street,  
Chippendale

**SEYMOUR**

**Previews**  
14 – 18 February  
**Opening Night**  
19 February  
**Season**  
20 February – 15 March

**Meet The Artists**  
Tuesday 25 February  
**Captioned Performance**  
Tuesday 11 March **CC**

**Performance Times**  
Monday – Friday 7pm  
Saturday 1pm & 7pm

**Supported by**



**SALLY BREEN  
FAMILY FOUNDATION**

*Nucleus* was developed with the support of the Sally Breen Family Foundation. Griffin is grateful for the support of the University of Sydney.





GRIFFIN THEATRE COMPANY PRESENTS  
IN ASSOCIATION WITH BELVOIR ST THEATRE

# KOREABOO

BY MICHELLE LIM DAVIDSON

14 JUNE – 20 JULY

📍 BELVOIR ST THEATRE

**Director** Jessica Arthur  
**Associate Director** Andrew Undi Lee  
**Dramaturg** Julian Larnach  
**With** Michelle Lim Davidson

♥ IF YOU LIKED:

*Golden Blood* by Merlynn Tong  
*Orange Thrower* by Kirsty Marillier  
*The Almighty Sometimes* by Kendall Feaver

Hannah had her trip all planned out. Travel to Korea. Visit her birth mother. Spend a golden summer creating precious memories.

But when she arrives in Seoul reality hits hard. Her Umma works in a convenience store day and night, barely taking a break. She seems more interested in stacking shelves and re-arranging the garden gnome display than connecting with a long-lost Australian daughter.

Hannah is Korean, yet in Umma's mind, Hannah is a "Koreaboo"—a foreigner captivated by K-pop, kimchi, and hanboks. Armed with only Google Translate and unrelenting optimism, Hannah must try to find space within Umma's world before the end of a sweltering summer.

Taking inspiration from the real events of **Michelle Lim Davidson's** life (*The Feather in the Web*, *The Newsreader*), this profound and heartfelt play marks the writing debut of one of Australia's most beloved performers. Michelle herself takes to the stage under the direction of **Jessica Arthur** (*The Dictionary of Lost Words*), in a reunion story that reaches across continents, cultures and Spotify® playlists.

KINDRED

LONGING

K-POP-TASTIC

**Venue**  
Downstairs Theatre,  
Belvoir St Theatre  
25 Belvoir Street, Surry Hills



**Previews**  
14 – 18 June  
**Opening Nights**  
19 & 20 June  
**Season**  
21 June – 20 July

**Meet The Artists**  
Tuesday 24 June  
**Captioned Performance**  
Tuesday 1 July

**Performance Times**  
Tuesday – Friday 7pm  
Saturday 1pm & 7pm  
Sunday 5.30pm

Supported by



Koreaboo was developed as part of Griffin Studio, with support from the Malcolm Robertson Foundation and Griffin Studio donors, and the Griffin Redraft Fund.





GRIFFIN THEATRE COMPANY PRESENTS  
IN ASSOCIATION WITH SYDNEY THEATRE COMPANY

# NATURISM

BY ANG COLLINS  
25 OCTOBER – 15 NOVEMBER  
SYDNEY THEATRE COMPANY

**Director & Dramaturg** Declan Greene  
**Intimacy Director** Chloë Dallimore  
**Set & Costume Designer** James Browne  
**With** Camila Ponte Alvarez

## ♥ IF YOU LIKED:

*Kill Climate Deniers* by **David Finnigan**  
*Sex Magick* by **Nicholas Brown**  
*The Feather in the Web* by **Nick Coyle**

No internet. No intruders. No clothes.

Far from the trappings of civilisation, a group of nudist baby boomers have created their very own off-grid bush eco-paradise. An unseasonably hot summer approaches, but no worries! They've got enough preserves, pickles, and Fleetwood Mac to get them through it... probably.

Enter Evangeline—a Gen Z eco-influencer, on the run from something terrible. She's loud. She's over-sensitive. And she wants to stay.

Set in a time of unforgiving drought, with hot winds foretelling worse times ahead, an all-nude, all-legendary cast takes you on an hilarious journey of hope and delusion in the face of disaster.

Playwright **Ang Collins** (*Blueberry Play*, *Spewy*) makes her Mainstage debut with a work of glittering comic absurdity. Teaming up with Artistic Director **Declan Greene** (*The Lewis Trilogy*, *Sex Magick*), *Naturism* takes an irreverent and deeply messy look at just how much heat our squishy, naked little bodies can take.

COMEDY

BARE-ALL


CHAOS

**Venue**  
Wharf 2 Theatre,  
Sydney Theatre Company  
Wharf 4/5, 15 Hickson Road,  
Walsh Bay

**Previews**  
25 – 29 October

**Opening Night**  
30 October

**Season**  
31 October – 15 November

**Meet The Artists**  
Tuesday 4 November  
**Captioned Performance**  
Tuesday 11 November 

**Performance Times**  
**Monday – Friday** 7pm  
**Saturday** 1pm & 7pm

**Supported by**



**PRODUCTION PARTNER**



*Naturism* was commissioned through the Incubator – NSW Theatre (Emerging) Fellowship in collaboration with Griffin Theatre Company in 2020. It was subsequently developed by Griffin Theatre Company with the support of the Griffin Studio Workshop donors. The development was supported by Belvoir St Theatre and this project was supported through a residency at Theatre and Performance Studies, the University of Sydney. *Naturism* is supported by Griffin's Production Partner program.





SPECIAL RETURN SEASON

# WHITEFELLA YELLA TREE

BY DYLAN VAN DEN BERG

**Co-Directors** Declan Greene & Amy Sole  
**Set & Costume Designer** Mason Browne  
**Lighting Co-Designers** Kelsey Lee & Katie Sfetkidis  
**Composer & Sound Designer** Steve Toulmin  
**Dramaturg** Andrea James  
**With** Joseph Althouse

After a runaway premiere season at the SBW Stables Theatre in 2022, *Whitefella Yella Tree* is back to wow audiences in 2025.

Once in a blue moon, in the middle of nowhere, two teenage boys meet under a lemon tree. After a rough start, a fragile friendship fruits into a heady romance.

If history would just unfurl a little differently, the boys might have a beautiful future ahead of them. But without knowing it, Ty and Neddy are poised on the brink of a world that is about to change forever.

Palawa playwright **Dylan Van Den Berg** has won most of Australia's major playwriting awards—including the Griffin Award, the David Williamson Prize and the NSW Premier's Literary Award for playwriting (twice!).

In *Whitefella Yella Tree* Dylan has penned a heart-warming and heart-breaking story about love, Country and Blak queerness through history. The extraordinary **Joseph Althouse** (*Green Park*) makes his return to Griffin, alongside the directing team of Griffin's **Declan Greene** and Wiradjuri/Worimi theatremaker **Amy Sole**.

POETIC  
QUEER  
TEEN ROMANCE

♥ IF YOU LIKED:

*Green Park* by **Elias Jamieson Brown**  
*Holding the Man*, adapted by **Tommy Murphy**,  
from the book by **Timothy Conigrave**  
*First Love is the Revolution* by **Rita Kalnejais**

★★★★★ — Suzy Wong, *Suzy Goes See*

★★★★ — Cassie Tongue,  
*The Sydney Morning Herald*

★★★★½ — Dennis Clements, *ArtsHub*

Presented by



Sydney Theatre Company  
19 September – 18 October  
sydneytheatre.com.au

Presented by



La Boite Theatre  
23 October – 8 November  
laboite.com.au

Presented by



University of Melbourne  
Arts and Culture  
13 – 15 November  
umac.melbourne

Supported by



*Whitefella Yella Tree* was developed as part of Griffin Studio, with support from the Malcolm Robertson Foundation and Griffin Studio donors, and through Melbourne Theatre Company's Cybec Electric Play Reading Series. The premiere production was supported by Griffin Theatre Company's Production Partner program.







GRIFFIN THEATRE COMPANY PRESENTS  
IN ASSOCIATION WITH OLD FITZ THEATRE  
A GREEN DOOR THEATRE PRODUCTION

# SISTREN

BY IOLANTHE  
26 JUNE – 12 JULY  
📍 OLD FITZ THEATRE



Director Ian Michael  
With Janet Anderson, Iolanthe

Isla and Violet are a 'lethal combination'. Their self-righteous headmaster thinks that's an insult. They think it's a cute name for a girl group. Too-smart, too precocious and way too outspoken, it's no surprise when these self-proclaimed soulmates are 'separated' until the end of the year. But the world outside their South London school is a divisive one for a cisgender Caribbean diva and her 'Ethel Cain adjacent' transgender bestie. As their cosmic connection is tested, one key question arises—will Isla and Violet be separated, or will they reign supreme?

The blazingly talented performer **Iolanthe** (*seven methods of killing Kylie Jenner*) makes her playwriting debut, sharing the stage with her IRL bestie, the extra-ordinary **Janet Anderson** (*Overflow*). The lines of fiction and friendship intertwine in this transcendent study of sisterhood across class, cultural and interdimensional boundaries.



GRIFFIN LOOKOUT

Venue  
The Old Fitz Theatre  
129 Dowling Street,  
Woolloomooloo



Previews  
26 – 28 June  
Opening Night  
28 June  
Season  
29 June – 12 July

Performance Times  
Tuesday – Friday 7pm  
Saturday 1pm & 7pm  
Sunday 5pm



Supported by



SISTREN play was supported by Australian Plays Transform through the Untold Stories Program.

GRIFFIN LOOKOUT

Griffin Lookout provides Sydney's most exciting independent theatremakers with a season at Griffin as well as producing and artistic support from the Griffin team.



GRIFFIN THEATRE COMPANY PRESENTS  
IN ASSOCIATION WITH MERRIGONG  
THEATRE COMPANY & OLD FITZ THEATRE

# BIRDSONG OF TOMORROW

BY NATHAN HARRISON  
21 AUGUST – 6 SEPTEMBER  
📍 OLD FITZ THEATRE

Director Emma McManus  
Composer & Sound Designer Tom Hogan  
Video & Production Designers Clare Britton,  
Troy Reid & Solomon Thomas  
With Nathan Harrison

The wandering albatross. The buff-breasted paradise kingfisher. The superb fairywren. Every day across this country, birds sing. Songs passed down through generations. Songs of a world that's gone and a world that's changing. Birds fill every part of the planet with melody and colour. They soar and swim and run. And a lot of them are chickens.

**Nathan Harrison** (*Hottest 100 of Animals: A Countdown for the Anthropocene*) is a professional theatre-maker and an amateur birdwatcher, who has seen roughly 150 varieties in the last year alone.

Blending science, storytelling, music and video, *Birdsong of Tomorrow* is a playful and heartfelt look at our rapidly changing environment—and what birds might sing when we're gone.



Venue  
The Old Fitz Theatre  
129 Dowling Street,  
Woolloomooloo



Previews  
21 – 23 August  
Opening Night  
24 August  
Season  
26 August – 6 September

Performance Times  
Tuesday – Friday 7pm  
Saturday 1pm & 7pm  
Sunday 5pm



Supported by

*Birdsong of Tomorrow* was developed as part of Griffin Studio, with support from the Malcolm Robertson Foundation and Griffin Studio donors.

GRIFFIN LOOKOUT

Griffin Lookout provides Sydney's most exciting independent theatremakers with a season at Griffin as well as producing and artistic support from the Griffin team.



# 2025 SEASON CALENDAR



KOREABOO				14 JUN – 20 JUL		DOWNSTAIRS THEATRE, BELVOIR ST THEATRE	
MONDAY	TUESDAY	WEDNESDAY	THURSDAY	FRIDAY	SATURDAY	SUNDAY	
09	10	11	12	13	14 7pm (P)	15 7pm (P)	JUN
16	17 7pm (P)	18 7pm (P)	19 7pm (O)	20 7pm (O)	21 7pm	22 5.30pm	JUL
23	24 7pm (M)	25 7pm	26 7pm	27 7pm	28 7pm	29 5.30pm	
30	01 7pm (CC)	02 7pm	03 7pm	04 7pm	05 1pm & 7pm	06 5.30pm	
07	08 7pm	09 7pm	10 7pm	11 7pm	12 1pm & 7pm	13 5.30pm	
14	15 7pm	16 7pm	17 7pm	18 7pm	19 1pm & 7pm	20 1pm	

BIRDSONG OF TOMORROW				21 AUG – 6 SEP		OLD FITZ THEATRE	
MONDAY	TUESDAY	WEDNESDAY	THURSDAY	FRIDAY	SATURDAY	SUNDAY	
18	19	20	21 7pm (P)	22 7pm (P)	23 7pm (P)	24 5pm (O)	AUG
25	26 7pm	27 7pm	28 7pm	29 7pm	30 1pm & 7pm	31 5pm	SEP
01	02 7pm	03 7pm	04 7pm	05 7pm	06 1pm & 7pm	07	

NUCLEUS		14 FEB – 15 MAR		REGINALD THEATRE, SEYMOUR CENTRE			
MONDAY	TUESDAY	WEDNESDAY	THURSDAY	FRIDAY	SATURDAY	SUNDAY	
10	11	12	13	14 7pm (P)	15 7pm (P)	16	FEB
17 7pm (P)	18 7pm (P)	19 7pm (O)	20 7pm	21 7pm	22 1pm & 7pm	23	MAR
24 7pm	25 7pm (M)	26 7pm	27 7pm	28 7pm	01 1pm & 7pm	02	
03 7pm	04 7pm	05 7pm	06 7pm	07 7pm	08 7pm	09	
10 7pm	11 7pm (CC)	12 7pm	13 7pm	14 7pm	15 1pm & 7pm	16	

WHITEFELLA YELLA TREE				19 SEP – 18 OCT		WHARF 1 THEATRE, SYDNEY THEATRE COMPANY	
MONDAY	TUESDAY	WEDNESDAY	THURSDAY	FRIDAY	SATURDAY	SUNDAY	
15	16	17	18	19 7.30pm (P)	20 7.30pm (P)	21	SEP
22 7.30pm (P)	23 7.30pm (O)	24 7.30pm	25 7.30pm	26 7.30pm	27 1.30pm & 7.30pm	28	OCT
29 6.30pm	30 6.30pm	01 1pm & 7.30pm	02 7.30pm	03 7.30pm	04 1.30pm & 7.30pm	05	
06 6.30pm	07 6.30pm (CC)	08 1pm & 7.30pm	09 7.30pm	10 7.30pm	11 1.30pm & 7.30pm	12	
13 6.30pm	14 6.30pm	15 7.30pm	16 11.30am & 7.30pm	17 7.30pm	18 1.30pm & 7.30pm	19	

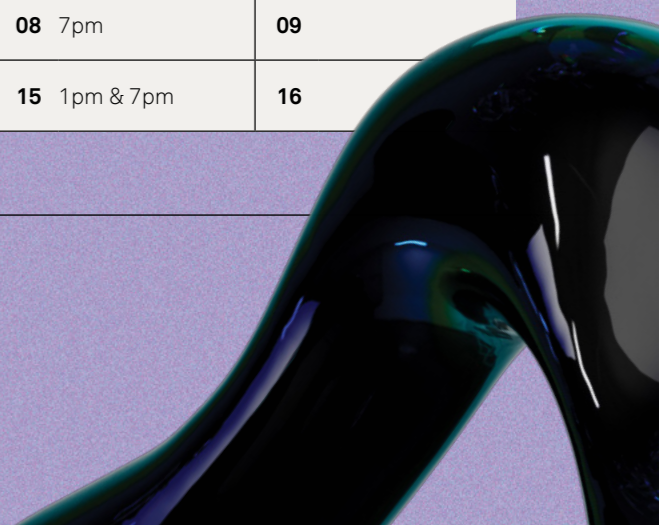
\* Book tickets to the Sydney season of *Whitefella Yella Tree* at [sydneytheatre.com.au](http://sydneytheatre.com.au)

SISTREN		26 JUN – 12 JUL		OLD FITZ THEATRE			
MONDAY	TUESDAY	WEDNESDAY	THURSDAY	FRIDAY	SATURDAY	SUNDAY	
23	24	25	26 7pm (P)	27 7pm (P)	28 1pm (P) & 7pm (O)	29 5pm	JUN
30	01 7pm	02 7pm	03 7pm	04 7pm	05 1pm & 7pm	06 5pm	JUL
07	08 7pm	09 7pm	10 7pm	12 7pm	12 1pm & 7pm	13	

NATURISM				25 OCT – 15 NOV		WHARF 2 THEATRE, SYDNEY THEATRE COMPANY	
MONDAY	TUESDAY	WEDNESDAY	THURSDAY	FRIDAY	SATURDAY	SUNDAY	
20	21	22	23	24	25 7pm (P)	26	OCT
27 7pm (P)	28 7pm (P)	29 7pm (P)	30 7pm (O)	31 7pm	01 1pm & 7pm	02	NOV
03 7pm	04 7pm (M)	05 7pm	06 7pm	07 7pm	08 7pm	09	
10 7pm	11 7pm (CC)	12 7pm	13 7pm	14 7pm	15 1pm & 7pm	16	

**LEGEND** (P) PREVIEW (O) OPENING (M) MEET THE ARTISTS (CC) CAPTIONED PERFORMANCE

Details in this brochure are correct at the time of publication. Griffin reserves the right to add, withdraw or substitute artists and to vary the program and prices should the need arise.





# FOR AUDIENCES

Griffin believes that theatre is for everyone. We are passionate about welcoming as many people as we can to be a part of the stories we tell. There are heaps of ways for theatre lovers to connect with our productions, programs and events all year round.

## MONDAY RUSH

Theatre tickets can be expensive. But since 2009 Griffin has proudly run its famous Monday Rush ticket program.

Every Monday at 12pm, an allocation of \$25 Rush tickets are released for that evening's performance. These can be purchased online, or for those who are unable to book online, over the phone.

## CAPTIONED PERFORMANCES

Griffin's 2025 productions include a Closed Captioned performance. Captions can be viewed on a dedicated screen or on a personal device and a complimentary digital copy of the play script can be sent upon request.

Griffin is also a member of the Companion Card program. To find out more, we encourage you to contact our Box Office.

## GRIFFIN AMPLIFY

Amplify is Griffin's Audience Development program. In 2025, we're deep diving with the help of some community engagement specialists to better understand our audiences and what they want from a theatre experience. Stay tuned for opportunities to learn more.

### Supported by

GIRGENSOHN FOUNDATION

# EVERYTHING YOU NEED TO KNOW

## BOOKING FEES

A booking fee of \$7 is applicable to transactions over the phone and received via post. Book online to avoid processing fees.

## E-TICKETS

As part of our Green Griffin Initiative, tickets will be emailed to you closer to the performance date. Griffin no longer prints physical tickets (think of all the trees we've saved!)

## TICKET EXCHANGES

Tickets may be exchanged for \$7, subject to availability, up to 48 hours prior to the performance. Griffin subscribers are entitled to unlimited exchanges (you read that right!).

## GRIFFIN'S BOX OFFICE

**Online any time at** griffintheatre.com.au  
**By phone** Monday to Friday, 10am – 6pm, (02) 9361 3817

## SINGLE TICKETS

Tickets for all 2025 productions at Griffin will go on sale on the 3 December. Lock in your year of theatre early with a subscription and get the best ticket prices!

## GROUP TICKETS

We're happy to offer discounts for group bookings of 8 people or more in one transaction. Contact our Box Office for more information.

## GIFT CERTIFICATES

A Griffin Gift Certificate makes a fabulous present and can be used to cover the cost of a subscription, single ticket, or any dollar amount of your choosing.

## SEATING

All of Griffin's 2025 productions are general admission. This means that you and your loved ones can book separately and still find a spot together on the night!

## ACCESSIBILITY

Presenting work at different venues across Sydney and beyond in 2025 means more audiences than ever before can experience the theatre we make! **Check out our partner venues' Access information:**

**Seymour Centre**  
seymourcentre.com/visit/access

**Belvoir St Theatre**  
belvoir.com.au/visit/accessibility

**Sydney Theatre Company**  
sydneytheatre.com.au/your-visit/the-wharf-theatres/accessibility

**Old Fitz Theatre**  
oldfitztheatre.com.au/welcome

*If you have any questions regarding our partner theatres' accessibility, please visit our website, or contact our Box Office team and we can talk through the options available to you or your theatre companion.*

# SUBSCRIBE TO GRIFFIN IN 2025!

Griffin's 2025 Season is a thrilling collision of Australia past, present and future!

Continuing our turn about town while we remodel the SBW Stables Theatre, Griffin has a host of great work to see—and you can get more Griffin for your buck by subscribing to everything on offer in 2025.

A subscription to Griffin is your VIP ticket to some of Australia's funniest, most fearless, most ferocious new work. There is no better way to get your theatre fix than organising a year of Griffin!

# BIG BENEFITS

## SAVE UP TO 15% ON TICKETS

Subscribing to Griffin gives you the most bang for your buck, saving you anywhere from 5% to 15% off single tickets!

## SHARE THE LOVE

Bring friends and family to 2025 Griffin plays and only pay the discounted subscription rate for extra tickets!

## FLEXIBLE FINANCES

Subscribers can elect to pay in instalments instead of all at once—don't break the bank!

## FIRST IN, BEST DRESSED

Subscribers receive a priority window to book in for our 2025 shows before anyone else!

## CHANGE YOUR MIND

Something came up at the last minute? Subscribers get unlimited fee-free\* exchanges—you read that right!

\*Changing from Preview to Season tickets will incur a ticket upgrade cost. Subject to availability, some conditions apply.

## NEVER MISS A SHOW!

As they say—a play is as good as a holiday! Fill your calendar with outings in advance so

you can sit back and enjoy the ride, without the stress of missing out on a sell-out show.

## MEET THE ARTISTS

Book in for our inspiring Meet the Artists post-show Q&As to get up close and personal with the theatremakers behind your new favourite Griffin production.

## EARLY ACCESS TO WHITEFELLA YELLA TREE

Griffin subscribers get early access to *Whitefella Yella Tree* by **Dylan Van Den Berg**, presented by Sydney Theatre Company.

# MORE SUBSCRIBER REWARDS

## WELL READ

Receive 20% off online script purchases thanks to our publishing partner **Currency Press**.

## SAY CHEESE!

Griffin subscribers receive 10% off in-store at local favourite **Penny's Cheese Shop**.

## STAY A WHILE

Thanks to the boutique **Hotel Indigo Sydney Potts Point**, Griffin subscribers receive 20% off room bookings.\*

\*Terms and conditions apply.

## GIN GIN!

Thanks to our friends at **Four Pillars Gin**, Griffin subscribers receive 10% off in-store and at **Eileen's Bar!**

## WELL ORCHESTRATED

Receive 10% off Adult single tickets to the **Australian Chamber Orchestra's** 2025 National Concert Season performances.\*

\*Terms and conditions apply. Transaction fees may apply. Subject to availability.

## MANGIA!

Fill your belly with a special pronto set menu at **Fabbrica Darlo**.

## BOTTOMS UP

Fancy a tippie? Enjoy a nifty 12% off online orders over \$100 from our friends at **P&V Merchants**.



# HOW TO SUBSCRIBE



SCAN QR  
TO SUBSCRIBE  
TO 2025



Checked out the Season? Chosen your favourite plays? Pencilled dates in your diary? Then you're ready to subscribe to Griffin 2025!

## BOOK ONLINE

Jump the queue and book your subscription online at [griffintheatre.com.au](http://griffintheatre.com.au)! It's quick and easy—simply select your plays and dates, then add your co-subscriber's details.

## BOOK VIA EMAIL

Head to [griffintheatre.com.au/current-season](http://griffintheatre.com.au/current-season) and download the digital booking form. Fill it out and attach it to an email to [boxoffice@griffintheatre.com.au](mailto:boxoffice@griffintheatre.com.au)

## BOOK OVER PHONE

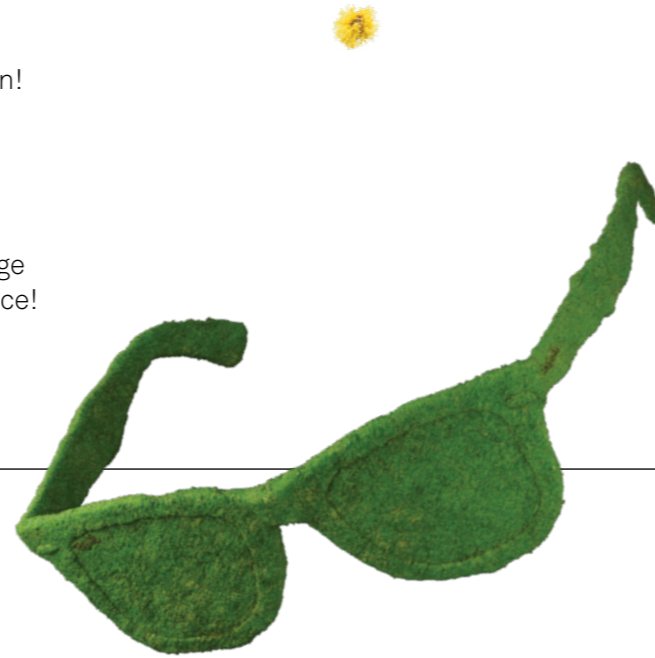
Give our friendly Box Office a call on 02 9361 3817 to process your subscription!

Please note that our Box Office hours for subscriptions are 10am—6pm Monday to Friday.

## BOOK BY POST

Fill out our handy booking form on the page opposite and post it to the Griffin Box Office!

Please post as soon as possible—we process mailed booking forms in the order we receive them.



# PRICING

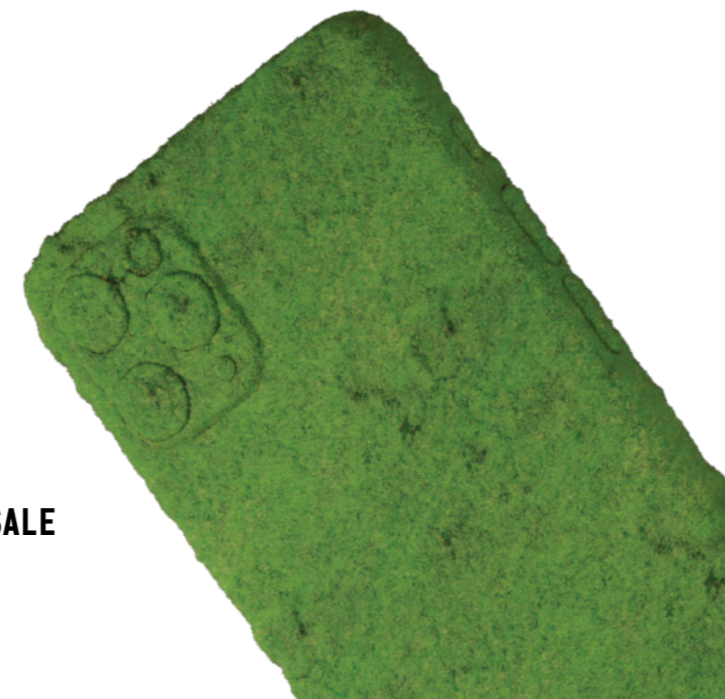


2025 PRICING			3 PLAY SUBSCRIPTION Save up to 15% on Main Season tickets!		2 PLAY SUBSCRIPTION Save up to 10% on Main Season tickets!		SINGLE TICKETS Single tickets will go on sale to the general public from late 2024.	
			SEASON	PREVIEW*	SEASON	PREVIEW*	SEASON	PREVIEW*
MAIN SEASON	NUCLEUS KOREABOO NATURISM	FULL	\$65	\$61	\$68	\$65	\$72	\$68
		SENIOR	\$61	\$58	\$64	\$62	\$68	\$64
		CONCESSION	\$54	\$51	\$57	\$54	\$60	\$57
		UNDER 35	\$36	\$34	\$38	\$36	\$40	\$38
GRIFFIN LOOKOUT	SISTREN BIRDSONG OF TOMORROW	GENERAL	\$42				\$48	
SPECIAL RETURN SEASON	WHITEFELLA YELLA TREE	Griffin subscribers receive special early access to tickets to <i>Whitefella Yella Tree</i> , presented by Sydney Theatre Company. Tickets to <i>Whitefella Yella Tree</i> can be booked at <a href="http://sydneytheatre.com.au">sydneytheatre.com.au</a> , <a href="http://laboite.com.au">laboite.com.au</a> and <a href="http://umac.melbourne">umac.melbourne</a> .						

\*Please note that the following dates are preview shows: Nucleus 14 – 18 February, Koreaboo 14 – 18 June, Naturism 25 – 29 October.

# 2025 KEY DATES

- 26 SEPTEMBER 2024 → SUBSCRIPTIONS ON SALE
- 1 DECEMBER 2024 → ENTRIES CLOSE FOR SUPER BIG WIN
- 2 DECEMBER 2024 → WINNER ANNOUNCED FOR SUPER BIG WIN
- 3 DECEMBER 2024 → SINGLE TICKETS FOR ALL GRIFFIN 2025 SHOWS ON SALE



# BOOKING FORM

## 1 CONTACT DETAILS

	FULL NAME	MOBILE	EMAIL	GRIFFIN SUBSCRIBER NUMBER (if known)	CONCESSION TYPE*
MAIN SUBSCRIBER					
CO-SUBSCRIBER #1					
CO-SUBSCRIBER #2					
CO-SUBSCRIBER #3					
CO-SUBSCRIBER #4					

Please provide details of any specific access or seating requirements, or any extra information you'd like us to know about you or your co-subscribers:

\* Please email scanned proof of your concession to: [boxoffice@griffintheatre.com.au](mailto:boxoffice@griffintheatre.com.au)

I would like to sign up to Griffin's ENEWS!

## 2 CHOOSE YOUR SUBSCRIPTION

SUBSCRIPTION TYPE  3 PLAY  2 PLAY

### CHOOSE YOUR PERFORMANCES

SHOW	DATE & TIME	# SEATS / TICKET TYPE +	TOTAL \$
NUCLEUS		_____	
KOREABOO		_____	
NATURISM		_____	

\*Please note that the following dates are preview shows:

Nucleus 14 – 18 February, Koreaboo 14 – 18 June, Naturism 25 – 29 October—refer back to the table on page 18 for pricing.

+Tickets purchased at non-full rates may require proof of eligibility.

SUBTOTAL \$

TURN THE PAGE TO CONTINUE  
BOOKING YOUR SUBSCRIPTION





# BOOKING FORM

## 3 ADD SOME ON

### CHOOSE YOUR PERFORMANCES

SHOW	DATE & TIME	# SEATS / TICKET TYPE	TOTAL \$
SISTREN		x \$42	
BIRDSONG OF TOMORROW		x \$42	
			<b>SUBTOTAL \$</b>

## 4 MAKE A DONATION (optional)

Griffin couldn't exist without the support of passionate people who believe in new Australian stories as much as we do. The generosity of theatre lovers like you directly supports playwrights, actors and theatremakers—and when you visit us, you can see the impact of your support before your eyes on our stage!

All donations over \$200 are acknowledged on our website and in our printed programs.

I WOULD LIKE TO DONATE	<input type="checkbox"/> \$1,000	<input type="checkbox"/> \$500	<input type="checkbox"/> \$300	<input type="checkbox"/> \$50	<input type="checkbox"/> Other \$
<b>TOTAL \$</b>					

## 5 ADD IT UP

### ADD THE AMOUNTS FROM STEPS 1–3 TO CALCULATE THE TOTAL

SUBSCRIPTION PACKAGE	\$
ADD-ONS	\$
DONATION	\$
PROCESSING FEE*	+\$7.00
<b>TOTAL AMOUNT</b>	<b>\$</b>

\*Avoid processing fees by booking your 2025 subscription online at [griffintheatre.com.au](http://griffintheatre.com.au)!

# CONGRATULATIONS!

**YOU'RE BOOKED IN FOR 2025!**

YOU WILL RECEIVE A CONFIRMATION EMAIL ONCE YOUR SUBSCRIPTION IS PACKAGED, AND RECEIVE A SUBSCRIBER CARD IN THE NEW YEAR. YOUR E-TICKETS WILL BE SENT 3 DAYS PRIOR TO YOUR PERFORMANCE.



## 6 ALMOST THERE

### PAYMENT DETAILS

Visa/Mastercard\*  Cheque

Name

Card Number

Expiry

Signature

\*Unfortunately, we do not accept American Express cards.

### GRIFFIN CREDIT

The touch-and-go nature of the last three years has meant that you may have unused credit with Griffin. Here's your chance to cash it in!

Please put any pre-existing credit I have on my account with Griffin towards the total of my 2025 subscription.

### PAYMENT IN INSTALMENTS (OPTIONAL)

20% Now + 80% Later

50% Now + 50% Later

Final payments will be charged 15 January 2025 (credit card payment only)

## 7 ALL DONE! SUBMIT YOUR FORM

Send your completed form with scanned proof of concession (if applicable) to:

Post: **Griffin Theatre Company**  
13 Craignend Street, Kings Cross, NSW, 2011

Email: [boxoffice@griffintheatre.com.au](mailto:boxoffice@griffintheatre.com.au)

Please note that the Griffin Box Office will be closed between 23 December and 6 January inclusive.

# CREATIVE PROGRAMS



As the home of new Australian writing, Griffin's creative programs are the engine room that power the company's artistic output. Providing development pathways, financial support and professional mentorship that connects artists to each other across distance, discipline and generations, these programs wouldn't be possible without the philanthropic support of our family of donors.

## GRIFFIN AWARD

The Griffin Award is a cornerstone of Griffin's year, with a history of recognising new talent, elevating new voices and establishing the careers of Australian writers.

Last year the newly restructured Griffin Award (and inaugural Griffin Award Keynote) allowed us to increase the support we provide to playwrights connect with the wider playwriting community and celebrate the continuation of one of Griffin's most iconic traditions.

Thanks to the generosity of the **Copyright Agency's Cultural Fund**, the Griffin Award will once again offer a full commission (\$17,700) to the selected playwright, along with in-house dramaturgical support.

Entries for the 2025 Griffin Award open **late November 2024**.

**TICKETS FOR THE GRIFFIN AWARD KEYNOTE ADDRESS WILL GO ON SALE IN 2025!**

Supported by

**COPYRIGHT AGENCY**  
CULTURAL FUND

## COMMISSIONS

In recent years, Griffin has been able to commission writers thanks to the support of our donors and select government initiatives. This opportunity to support exceptional theatremakers is the first step in getting as many new Australian plays as we can onto our stage. Current writers under commission include: **Mary Rachel Brown, Adrian Russell Wills, Jules Orcullo, Elaine Crombie** and **Dylan Van Den Berg**.



## GRIFFIN STUDIO

Since 2011 Griffin Studio has provided support and mentorship to cohorts of writers seeking to make urgent and exciting work. Each year our Studio artists develop their work with support from the Griffin Artistic team, undertake workshops, connect with other artists and write, write, write.

Plays developed through Griffin Studio include *City of Gold* by **Meyne Wyatt**, *Orange Throwing* by **Kirsty Marillier** and *Whitefella Yella Tree* by **Dylan Van Den Berg**.

Applications for Griffin Studio 2025 open in **early October 2024**.

Supported by

**MALCOLM ROBERTSON FOUNDATION**

Thank you to our passionate **Griffin Studio** donors.



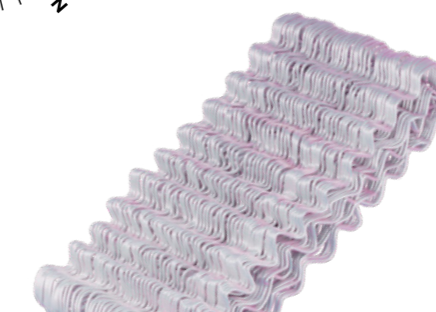
## GRIFFIN AMBASSADORS

The Griffin Ambassadors program has been running since 2004, ushering in the next generation of artists and audiences by providing season-long access to Griffin performances, exclusive workshops and connections with some of Australia's leading theatre professionals.

Applications for 2025 open on **1 November 2024**. Year 10-12 students who are keen to become Ambassadors can get in touch at [info@griffintheatre.com.au](mailto:info@griffintheatre.com.au).

Supported by

**ROBERTSON FOUNDATION**



## GRIFFIN STUDIO WORKSHOP

Griffin Studio Workshop is an important extension of our beloved Griffin Studio program. The Workshop provides artists with invaluable time and space to test out their plays with actors and directors, well ahead of the rehearsal room. Previous plays that have been nurtured through the Workshop include *Ghosting the Party* by **Melissa Bubnic**, *Golden Blood* 黄金血液 by **Merlynn Tong** and *Jailbaby* by **Suzie Miller**.

Thank you to the generosity of our **Griffin Studio Workshop** donors.

## SUZIE MILLER AWARD

Off the back of her world-wide smash-hit *Prima Facie*, Australian playwright **Suzie Miller** has created a new award to support mid-career playwrights in the creation of a daring and innovative new work. The inaugural winner is Australia's own **Mary Rachel Brown**, who is currently in the second half of her two-year residency where she is writing and developing a new work for the Griffin stage.

Supported by  
**Suzie Miller**







# SUPPORT NEW AUSTRALIAN STORYTELLING

Griffin is a small company with profound impact. Our commitment to the creation and development of new Australian work means that we break ground on urgent, relevant national conversations, nurturing generations of playwrights from page to stage.

We rely on the generosity of theatre lovers like you.

With the commitment and support of our donors, partners and foundations we are able to take bold risks, extend our impact, trial new programs, support our wider artistic community and bring plays from initial idea to execution. So much of what you see at Griffin—both on stage and off—is thanks to our family of supporters.

**Donating to Griffin is open to all. Every gift makes a difference.**

**All donations over \$2 are tax deductible.**

## HOW TO DONATE

### GIVE ONLINE



### GIVE WITH YOUR SUBSCRIPTION

Round up or add a donation on top of your Griffin tickets when you book online or on **page 20**.

### GIVE VIA DIRECT DEBIT

It takes just a few clicks to set up a one-off or monthly donation to Griffin!

**Griffin Theatre Company Ltd Donations Fund  
Commonwealth Bank  
BSB: 062-014  
ACC: 1034-8422**

*Email us at [philanthropy@griffintheatre.com.au](mailto:philanthropy@griffintheatre.com.au) to let us know you've donated.*

### GIVE A GIFT IN YOUR WILL

Want to become a GFF: Griffin Friend Forever? Make a lasting impact and secure the future of Griffin by leaving a gift of any size in your will. To help us continue telling Australian stories for many years to come, reach out to our team for a confidential discussion and more information.

### GIVE US A CALL

Contact our friendly Development team to make a gift or discuss your support by calling **(02) 9332 1052** between 10am – 6pm, Monday to Friday or email [philanthropy@griffintheatre.com.au](mailto:philanthropy@griffintheatre.com.au)

## SUPPORT OUR PROGRAMS

There are many ways to become more involved with Griffin. Here are just a few ways to give to something you're passionate about.

### PRODUCTION PARTNERS

It takes courage to support new work. Since 2015 Production Partners have helped us deliver some of Griffin's most ambitious works—works that require more support to be fully realised. This program supports specialised skills within the creative team, productions with larger casts, additional dramaturgy and anything the work might require to give it that Griffin edge—daring, risky and dauntless.

You can join a group of passionate donors who help us deliver Griffin's biggest plays, from the first rehearsal through to Opening Night and beyond with a gift of \$10,000.

In 2025, we're inviting our Production Partners to support the premiere production of *Naturism* by **Ang Collins**.

### PRODUCTION PARTNER

### GRIFFIN WOMEN'S INITIATIVE

Join our collective of passionate and impressive individuals committed to providing viable pathways for creative women to achieve a substantial career in artistic leadership. This program forges a close relationship with Yorta Yorta/Gunaikurnai theatremaker **Andrea James** in supporting her role as Griffin's Associate Artistic Director.

You can become a part of the Griffin Women's Initiative with an annual gift of \$1,500.

### GRIFFIN STUDIO

Since 2012, Griffin Studio has been one of Australia's most successful creative lab programs for emerging artists. Griffin Studio is a year-long residency that provides pathways for artists to the mainstage. Supporters of this program will get to personally know our small annual cohort of early career playwrights as they gain invaluable experience inside a working theatre company while honing their craft and developing a new work.

If your passion is new writing, you can support the Griffin Studio with an annual commitment of \$5,000.

### GRIFFIN STUDIO WORKSHOP

Plays are meant to be experienced, not read. It's crucial that we give playwrights the time and space to test out their plays with actors and directors, well ahead of the rehearsal room.

If you love new work, you can directly support Griffin's artistic pipeline by making a donation of \$1,000 or more to Griffin Studio Workshop.





# OUR DONORS

Griffin would not exist without the support of our community that shares the same passion about platforming new Australian stories and nurturing the next generation of artists. Our donors' commitment and dedication to Australian theatre allows us to break new ground and bring new work to the stage.

If you've ever thought about donating to us, no matter how big or small, find out more or donate online at [griffintheatre.com.au/support](http://griffintheatre.com.au/support)

## PROGRAM PATRONS

**Griffin Ambassadors**  
Robertson Foundation

**Griffin Amplify**  
Girgensohn Foundation

**Griffin Literary Manager**  
Robertson Foundation

**Griffin Redraft Fund**  
Shane & Cathryn Brennan

**Suzie Miller Award**  
Suzie Miller

**Griffin Studio**  
Gil Appleton  
Darin Cooper Foundation  
Kiong Lee & Richard Funston  
Malcolm Robertson Foundation  
Geoff & Wendy Simpson OAM  
Danielle Smith & Sean Carmody

**Griffin Studio Workshop**  
Shane & Cathryn Brennan (Patron)  
Mary Ann Rolfe (Founding Patron)  
Iolanda Capodanno & Juergen Krufczyk  
Darin Cooper Foundation  
Bob & Chris Ernst  
Jane-Maree Hurley  
Susan MacKinnon  
Marina Grunstein Walking up the Hill Foundation  
Dianne & Peter O'Connell  
Pip Rath & Wayne Lonergan  
Jake Shavikin  
Merilyn Sleigh & Raoul de Ferranti

**Griffin Women's Initiative**  
Katrina Barter  
Julieanne Campbell  
Iolanda Capodanno  
Jane Clifford  
Jennifer Darin  
Lyndell Droga  
Mandy Foley  
Nicola Forrest AO  
Melinda Graham  
Sherry Gregory  
Rosemary Hannah & Lynette Preston  
Alexa Haslingden  
Page Henty  
Jane-Maree Hurley  
Tessa Leong  
Susan MacKinnon  
Sophie McCarthy  
Suzie Miller  
Sam Mostyn AC  
Naomi Parry  
Julia Pincus  
Jo Porter  
Ruth Ritchie  
Lenore Robertson AM  
Ann Sloan  
Deanne Weir  
Simone Whetton  
Ali Yeldham  
Anonymous (1)

## Production Partners 2024

**The Lewis Trilogy**  
by **Louis Nowra**  
Darin Cooper Foundation  
Robert Dick & Erin Shiel  
Rosemary Hannah & Lynette Preston  
Kate Morgan  
Bruce Meagher & Greg Waters  
Julia Pincus & Ian Learmonth  
Seaborn, Broughton & Walford Foundation

## SEASON DONORS

**Company Patrons**  
**\$100,000+**  
Shane & Cathryn Brennan  
Neilson Foundation

**Season Patrons**  
**\$50,000-\$99,999**  
Girgensohn Foundation  
Malcolm Robertson Foundation  
Robertson Foundation

**Mainstage Donors**  
**\$20,000-\$49,999**  
Carla Zampatti Foundation  
Darin Cooper Foundation  
Robert Dick & Erin Shiel  
Rosemary Hannah & Lynette Preston  
Julia Pincus & Ian Learmonth  
Sally Breen Family Foundation  
The Wales Family Foundation  
Anonymous (1)

**Production Donors**  
**\$10,000-\$19,999**  
Gordon & Marie Esden  
Ingrid Kaiser  
Kate Morgan  
Bruce Meagher & Greg Waters  
Suzie Miller  
Mountain Air Foundation  
The Myer Foundation  
Dianne & Peter O'Connell  
Penelope Wass  
The WeirAnderson Foundation

**Rehearsal Donors**  
**\$5,000-\$9,999**  
Brian Abel & Mark Manton  
Antoinette Albert  
Gil Appleton  
Melissa Ball  
Lisa Barker & Don Russell  
Ellen Borda  
Margaret & Bernard Coles  
Corinne & Bryan  
Bob & Chris Ernst  
Carrillo Gantner AC & Ziyin Gantner  
Danny Gilbert AM & Kathleen Gilbert  
Sherry Gregory  
Libby Higgin & Gae Anderson  
Elizabeth Hurst  
Abraham & Helen James  
The Keir Foundation  
Lambert Bridge Foundation  
Kiong Lee & Richard Funston  
Marina Grunstein Walking Up the Hill Foundation  
Anthony Paul  
Rebel Penfold-Russell OAM  
Pip Rath & Wayne Lonergan  
In loving memory of Mary Ann Rolfe  
Geoff & Wendy Simpson OAM  
The Skrzynski Foundation  
Merilyn Sleigh & Raoul de Ferranti  
Danielle Smith & Sean Carmody  
Adam Suckling

## Final Draft Donors

**\$3,000-\$4,999**  
Iolanda Capodanno & Juergen Krufczyk  
James Hartwright & Kerrin D'Arcy  
John Head  
Jane-Maree Hurley  
Susan MacKinnon  
Don & Leslie Parsonage

## Workshop Donors

**\$1,000-\$2,999**  
Baty Douglass Foundation  
Katrina Barter  
Cherry & Peter Best  
Stephen & Annabelle Burley  
Julieanne Campbell  
Susie Carleton  
Anna Cleary  
Jane Clifford  
Marijke Conrade & Robert Henderson  
Lyndell Droga  
Brian Everingham  
John & Libby Fairfax  
Nicholas & Rowena Falzon  
Sandra & Rupert Ferman  
Mandy Foley  
Sandra Forbes  
Hon Ben Franklin MLC  
Robert Furley  
Melinda Graham  
Peter Graves Canberra  
Mink Greene  
Kate Halliday  
Kate Harrison  
Alexa Haslingden  
Page Henty  
Mark Hopkinson & Michelle Opie  
Susan Hyde  
Colleen Kane  
David & Adrienne Kitching  
Benjamin Law  
Tessa Leong  
John Lewis  
Helen Lynch AM & Helen Bauer  
Patricia Lynch  
Kyrsty Macdonald & Christopher Hazell  
Prudence Manrique  
Matthew & Josephine  
Sophie McCarthy  
Jacqui Mercer  
Catriona Morgan-Hunn  
Sam Mostyn AC  
Naomi Parry  
Shaan Perera  
Ian Phipps  
Jo Porter  
Kate Richardson & Chris Marrable  
In memory of Katherine Robertson  
Sylvia Rosenblum  
Jake Shavikin  
Jann Skinner  
Ann & Quinn Sloan  
Geoffrey Starr  
Leslie Stern  
David & Sarah Sulan  
Catherine Sullivan & Alexandra Bowen  
Sue Thomson  
Lesley Turnbull  
Janet Wahlquist  
Richard Weinstein & Richard Benedict  
Simone Whetton  
David Williamson AO & Kristin Williamson  
Elizabeth Wing  
Ali Yeldham  
Anonymous (5)

**First Draft Donors**  
**\$200-\$499**  
Sally Beath  
Edwina Birch  
David Caulfield  
Richard Carroll  
Sue Clark  
Edward Cooper & Daniel Zucker  
Bryan Cutler  
Paul & Jean Eagar  
Lisa & Brad Eisman  
Elizabeth Evatt  
Kevin Farmer  
Robyn Fortescue & Rosie Wagstaff  
Deane Golding  
Sylvia Hrovatin  
Matthew Huxtable  
James, Beu & Sue  
George & Maruschka Loupis  
Duncan McKay  
Margaret Murphy  
Carolyn Newman  
Peter Pezzutti  
Belinda Piggott & David Ojerholm  
Ann Rocca  
Michael & Noelleen Rosen  
Kevin & Shirley Ryan  
Margaret Teh  
Mary & Kerry Whitby  
Eve Wynhausen  
Anonymous (11)

**Griffin Friends Forever**  
We remember and honour those who have generously supported the future of Australian storytelling through a bequest to Griffin Theatre Company.

**Thank you:**  
Annette Mary Lunney  
Estate of the Late John William Roe

CURRENT AS OF  
30 AUGUST 2024

## Reading Donors

**\$500-\$999**  
Nicole Abadee & Rob Macfarlan  
Jane Christensen  
David Davies  
Michael Diamond AM  
Max Dingle OAM  
Sue Donnelly  
Peter Gray & Helen Thwaites  
David Hoskins & Paul McKnight  
Michael Jackson  
Nicki Jam

Greg Lamont & Gerard Wilmann  
Narelle Lewis  
Noella Lopez  
Peter Lowry AM & Dr Carolyn Lowry OAM  
Ian & Elizabeth MacDonald  
Robert Marks  
Christopher Matthies & Graham Parsons  
Dr Stephen McNamara  
Virginia Pursell  
A.O. Redmond  
Steve Riethoff  
Arahni Sont  
Fiona Thomas  
Mike Thompson  
Samantha Turley  
Julie Whitfield  
Anonymous (3)

# OUR FAMILY

## BOARD

Bruce Meagher (Chair)  
Guillaume Babilie  
Nigel Barrington  
Simon Burke AO  
Julieanne Campbell  
Jane Clifford  
Declan Greene  
Nakul Legha  
Julia Pincus  
Lenore Robertson AM  
Simone Whetton

**ARTISTIC DIRECTOR AND CO-CEO**  
Declan Greene

**EXECUTIVE DIRECTOR AND CO-CEO**  
Julieanne Campbell

**GENERAL MANAGER**  
Khym Scott

**ADMINISTRATION AND TICKETING COORDINATOR**  
Hayley Schmidt

**ASSOCIATE ARTISTIC DIRECTOR**  
Andrea James

**LITERARY MANAGER**  
Dylan Van Den Berg

**LITERARY ASSOCIATE**  
Julian Larnach

**COMMISSIONED WRITERS**  
Mary Rachel Brown (Suzie Miller Award), Elaine Crombie, Adrian Russell Wills, Jules Orcullo (Griffin Award), Adrian Russell Wills

**SENIOR PRODUCER**  
Emma Sampson

**ASSOCIATE PRODUCER**  
Cassie Hamilton

**HEAD OF DEVELOPMENT**  
Jake Shavikin

**RELATIONSHIP MANAGER**  
Julia Scott Green

**MARKETING MANAGER**  
Erica Penollar

**MARKETING AND CONTENT PRODUCER**  
Keiden Cheung

**TICKETING MANAGER**  
Sami Nelson

**TICKETING ADMINISTRATOR**  
Nathan Harrison

**FRONT OF HOUSE MANAGER**  
Alex Bryant-Smith

**FRONT OF HOUSE**  
Riordan Berry, Kandice Joy, Max Philips, Maddy Withington, Willo Young

**TECHNICAL MANAGER**  
Sam Gray

**FINANCE MANAGER**  
Chrissy Riley

**FINANCE CONSULTANT**  
Emma Murphy

**PUBLICITY**  
Kabuku PR

**GRAPHIC DESIGN**  
Susu Studio

**PHOTOGRAPHY**  
Brett Boardman

**FILMMAKER**  
David Boon

**WEB DEVELOPER**  
DevQuoll

**SPECIAL THANKS**  
Pedram Biazar  
Mathew Lee  
Peter O'Connell  
Gileon Remulta  
JoJo Zhou

# OUR PARTNERS

## GOVERNMENT PARTNERS



## PATRON



## LEGACY BENEFACTOR



## CREATIVE PARTNERS



## PRESENTING PARTNERS



## COMPANY PARTNERS








# GRIFFIN THEATRE COMPANY



**Griffin Theatre  
Company**

13 Craighend Street  
Gadigal Land  
Kings Cross NSW 2011

(02) 9332 1052  
[griffintheatre.com.au](http://griffintheatre.com.au)

 [griffintheatrecompany](https://www.facebook.com/griffintheatrecompany)  
 [griffintheatre](https://www.instagram.com/griffintheatre)  
 [GriffinTheatreCompany](https://www.youtube.com/GriffinTheatreCompany)



Please consider reusing and recycling this brochure. There's never been a better time to rekindle one's love for papier mâché!